

P2041 Nov.  
WASSCE 2011  
GEOGRAPHY 1  
Objective & Essay  
2 hours 40 minutes

1

Name: .....

Index Number: .....

THE WEST AFRICAN EXAMINATIONS COUNCIL  
West African Senior School Certificate Examination

November 2011

GEOGRAPHY 1

2 hours 40 minutes

Do **not** open this booklet until you are told to do so. While you are waiting, write your **name** and **index number** in the spaces provided at the top right-hand corner of this booklet and thereafter, read the following instructions carefully. This paper consists of **two** sections; answer **Section A** on your Objective Test answer sheet and **Section B** in your answer booklet. **Section A** will last for **50 minutes** after which the answer sheets will be collected. Do **not** start **Section B** until you are told to do so. **Section B** will last for **1 hour 50 minutes**.

SECTION A  
OBJECTIVE TEST  
[50 marks]

50 minutes

- Use **HB** pencil throughout.
- If you have got a blank answer sheet, complete its top section as follows.
  - In the space marked *Name*, write in capital letters your **surname** followed by your **other names**.
  - In the spaces marked *Examination*, *Year*, *Subject* and *Paper*, write '**WASSCE**', '**2011 NOV.**', '**GEOGRAPHY**' and '**1**' respectively.
  - In the box marked *Index Number*, write your **index number** vertically in the spaces on the left-hand side. There are numbered spaces in line with each digit. Shade carefully the space with the same number as each digit.
  - In the box marked *Paper Code*, write the digits **204113** in the spaces on the left-hand side. Shade the corresponding numbered spaces in the same way as for your index number.
  - In the box marked *Sex*, shade the space marked **M** if you are **male**, or **F** if you are **female**.
- If you have got a pre-printed answer sheet, check that the details are correctly printed, as described in 2 above. In the boxes marked *Index Number*, *Paper Code* and *Sex*, **reshade** each of the shaded spaces.
- An example is given below, this is for a **male** candidate, whose **name** is **Chukwuma Adekunle CIROMA**, whose **index number** is **5251102068** and who is offering **Geography 1**.

THE WEST AFRICAN EXAMINATIONS COUNCIL

PRINT IN BLOCK LETTERS

Name: CIROMA CHUKWUMA ADEKUNLE Examination: WASSCE Year: 2011 NOV.  
Surname Other Names  
Subject: G E O G R A P H Y Paper: 1

INDEX NUMBER	
5	0 1 2 3 4 5 6 7 8 9
2	0 1 2 3 4 5 6 7 8 9
5	0 1 2 3 4 5 6 7 8 9
1	0 1 2 3 4 5 6 7 8 9
1	0 1 2 3 4 5 6 7 8 9
0	0 1 2 3 4 5 6 7 8 9
2	0 1 2 3 4 5 6 7 8 9
0	0 1 2 3 4 5 6 7 8 9
6	0 1 2 3 4 5 6 7 8 9
8	0 1 2 3 4 5 6 7 8 9

For Supervisors only.  
If candidate is absent shade this space: ☐

PAPER CODE	
2	0 1 2 3 4 5 6 7 8 9
0	0 1 2 3 4 5 6 7 8 9
4	0 1 2 3 4 5 6 7 8 9
1	0 1 2 3 4 5 6 7 8 9
1	0 1 2 3 4 5 6 7 8 9
3	0 1 2 3 4 5 6 7 8 9

SEX
Indicate your sex by shading the space marked <b>M</b> (for Male) or <b>F</b> (for Female) in this box: <input type="checkbox"/> M <input type="checkbox"/> F

INSTRUCTIONS TO CANDIDATES

- Use grade **HB** pencil throughout.
- Answer each question by choosing one letter and shading it like this: [A] [B] [C] ☒
- Erase completely any answers you wish to change.
- Leave extra spaces blank if the answer spaces provided are more than you need.
- Do not make any markings across the heavy black marks at the right-hand edge of your answer sheet.

Answer **all** the questions.

**Each** question is followed by **four** options lettered A to D. Find out the correct option for each question and shade **in pencil** on your answer sheet, the answer space which bears the same letter as the option you have chosen.

Give only **one** answer to **each** question. An example is given below.

Which of the following is **not** an ocean current in the North Atlantic?

- A. Labrador
- B. Benguela
- C. Cayenne
- D. Irminger

The correct answer is Benguela, which is lettered B and therefore answer space B would be shaded.

[ A ]



[ C ]

[ D ]

Think carefully before you shade the answer spaces; erase completely any answer(s) you wish to change.

Do all rough work on this question paper.

Now answer the following questions.

Study the map of **NNOLI DISTRICT** on page 3 and use it to answer Questions 1 – 10.

1. The scale of the map in *Representative Fraction* (RF) is

- A. 1 : 800,000.
- B. 1 : 600,000.
- C. 1 : 400,000.
- D. 1 : 200,000.

2. The distance “as the crow flies” from Ede to Oye is

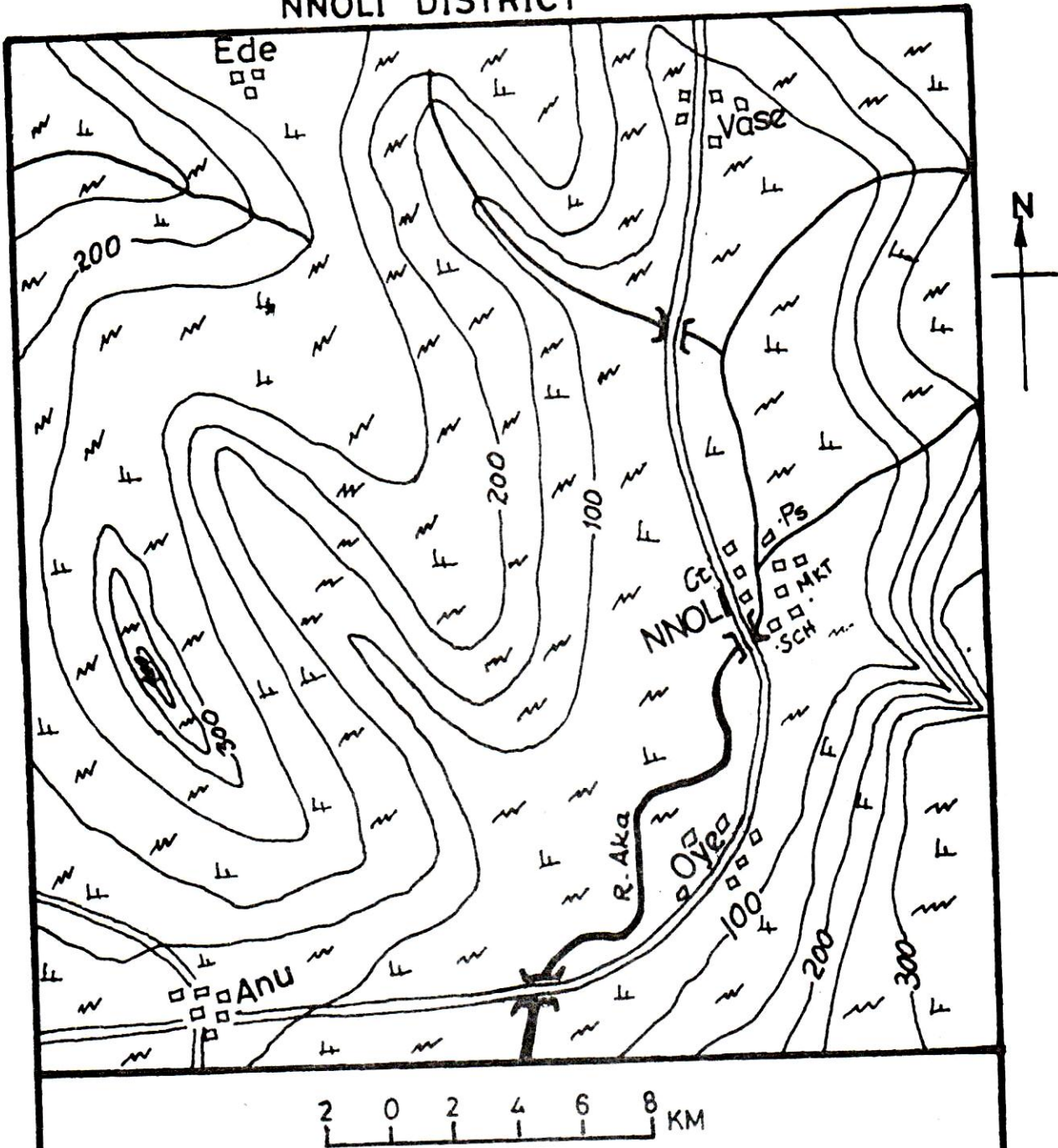
- A. 30 km.
- B. 35 km.
- C. 40 km.
- D. 45 km.

3. What type of settlement is Anu?

- A. Linear
- B. Dispersed
- C. Nodal
- D. Port town



# NNOLI DISTRICT



## KEY

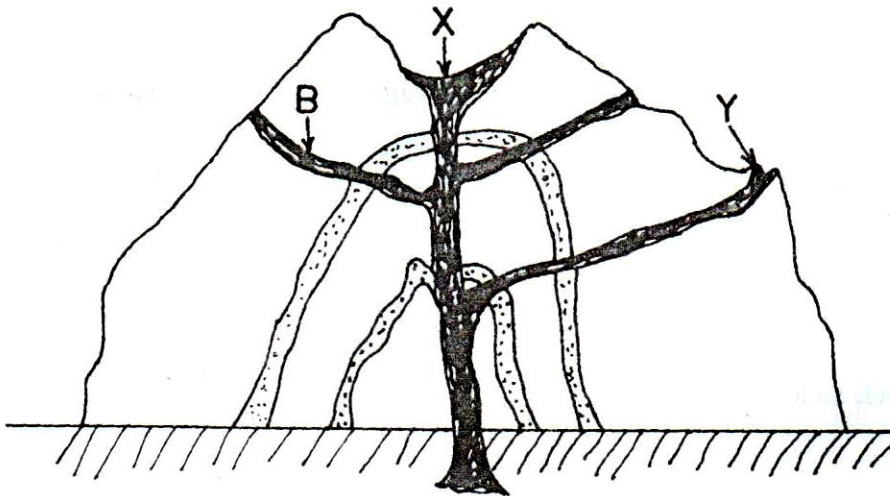
	Contour in metres	Ps	Police station
	Road		Savannah scrub
	River		Settlement
	Scattered cultivation		Bridge
MKT	Market		
Ct	Court House		

Turn over

4. The **highest** contour line on the map is
- A. 400 m.
  - B. 350 m.
  - C. 250 m.
  - D. 200 m.
5. If the map is enlarged to twice its size, the new scale will be
- A. 1 : 100,000.
  - B. 1 : 200,000.
  - C. 1 : 300,000.
  - D. 1 : 600,000.
6. The distance by road in kilometres from Vase to Anu is approximately
- A. 12.
  - B. 44.
  - C. 66.
  - D. 88.
7. **NNOLI** is likely to be the **most** important settlement in the area because it is
- A. both an administrative and a commercial centre.
  - B. a nucleated settlement.
  - C. on a road and river junction.
  - D. at the centre of the map.
8. The bearing of **NNOLI** from Anu is
- A. N 55° E.
  - B. S 55° E.
  - C. S 50° E.
  - D. S 50° W.
9. The crop that is **most likely** to do well in **NNOLI** settlement is
- A. millet.
  - B. rice.
  - C. guinea corn.
  - D. yam.

10. Which of the following is a likely economic activity in **NNOLI DISTRICT**?
- A. Lumbering
  - B. Animal rearing
  - C. Crop cultivation
  - D. Mining
11. The solar system comprises the
- A. sun, the earth and pluto.
  - B. sun and the earth.
  - C. sun and its nine planets.
  - D. sun, the earth and the moon.
12. The **smallest** and **hottest** planet is
- A. mercury.
  - B. venus.
  - C. earth.
  - D. mars.
13. The earth completes its rotation on its own axis from west to east once in every
- A. 24 hours.
  - B. 48 hours.
  - C. 24 days.
  - D. 365 days.
14. The **Great Circle** includes **two**
- A. latitudes.
  - B. longitudes.
  - C. latitudes and longitudes.
  - D. opposite longitudes and the Equator.
15. In which of the following regions are the four seasons- spring, summer, autumn and winter better developed?
- A. Tropical
  - B. Temperate
  - C. Frigid
  - D. Equatorial

16. What will be the local time in country X,  $15^{\circ}E$  when it is 5.00 p.m. in country Y,  $45^{\circ}E$ ?
- 1 p.m.
  - 2 p.m.
  - 3 p.m.
  - 4 p.m.
17. Regions lie in high latitudes when they are between
- latitude  $0^{\circ}$  and  $60^{\circ}$  south.
  - latitude  $60^{\circ}$  and the Poles.
  - latitude  $60^{\circ}$  and the North Pole only.
  - latitude  $0^{\circ}$  and the South Pole.
18. Igneous rocks are formed when
- glacier transports and deposits materials in layers.
  - rivers transport and deposit materials along their banks.
  - materials from the earth's interior are poured into the earth or unto the surface.
  - materials are transported and deposited by the wind.
19. Another name for residual mountain is
- volcanic mountain.
  - mountain of denudation.
  - mountain of elevation.
  - mountain of intrusion.



Use the diagram above to answer questions 20 and 21.

20. The feature marked X is a
- pipe.
  - crater.
  - sill.
  - cone.



21. The feature marked **B** is a
- A. subsidiary dyke.
  - B. batholith.
  - C. sill.
  - D. lopolith.
22. A **major** characteristic of limestone landscape is
- A. absence of surface drainage.
  - B. absence of depression.
  - C. presence of surface drainage.
  - D. presence of luxuriant vegetation.
23. Permafrost is
- A. gentle breeze all year round.
  - B. permanently frozen subsoil.
  - C. very heavy frost.
  - D. corrugation on the surface due to freezing.
24. Soils which have developed under similar climatic conditions are classified as
- A. intra zonal soils.
  - B. azonal soils.
  - C. zonal soils.
  - D. horizontal soils.
25. "The soil is coarse, gritty, loose with large pore spaces, well aerated and has high capillarity". Which type of soil does this describe?
- A. Clay
  - B. Loamy
  - C. Sandy
  - D. Clay-loam
26. Which of the following is **not** an economic benefit of soil to mankind?
- A. Provision of minerals
  - B. Base for vegetation
  - C. Base for agriculture
  - D. Soil erosion

27. A kind of wind-deposited soil is
- A. scree.
  - B. talus.
  - C. loess.
  - D. laterite.
28. "The trees are evergreen, with broad leaves, having three tiers of canopy of heterogenous character, with abundant hardwood". Which vegetation type does this describe?
- A. Cool temperate forest
  - B. Tropical rain forest
  - C. Tropical grassland
  - D. Mediterranean woodland
29. Mediterranean vegetation is described as xerophytic. This means the vegetation is
- A. cold resistant.
  - B. drought resistant.
  - C. heat resistant.
  - D. fire resistant.
30. All the following explain the causes of desert encroachment **except**
- A. deforestation.
  - B. bush burning.
  - C. controlled grazing.
  - D. prolonged drought.
31. Which of the following pairs of environmental hazards are rare to find in the same place?
- A. Drought and desertification
  - B. Flood and thunderstorms
  - C. Hurricane and typhoon
  - D. Drought and flood
32. What type of forest is found where both temperature and rainfall are high throughout the year?
- A. Temperate forest
  - B. Coniferous forest
  - C. Tropical monsoon forest
  - D. Tropical rainforest



33. The high diurnal temperature range in tropical deserts is **best** explained by
- A. absence of cloud cover.
  - B. absence of onshore winds.
  - C. very low rainfall.
  - D. very low humidity.
34. A plunge pool can be found at the
- A. lower course of a river.
  - B. confluence of two rivers.
  - C. foot of a waterfall.
  - D. centre of a crater lake.
35. River Niger has its source in the
- A. Tibesti plateau.
  - B. Eastern highlands.
  - C. Guinea highlands.
  - D. Deccan plateau.
36. A change in the function of a settlement from a rural character to an urban character is called
- A. conurbation.
  - B. urbanization.
  - C. indigenization.
  - D. industrialization.
37. The high population concentration of people along the Nile valley in Egypt is **best** explained by
- A. favourable climate.
  - B. unfavourable relief.
  - C. availability of water for irrigation.
  - D. presence of minerals.
38. Which of the following **best** explains the high population density along the valleys of the big rivers of South East Asia?
- A. Abundance of water supply
  - B. Abundant supply of Hydro Electric Power (HEP)
  - C. The rivers provide good waterway for movement of people
  - D. The valleys have fertile alluvial soils for productive agriculture

39. Countries embark on industrialization for the following reasons **except**
- A. conservation of foreign exchange.
  - B. improvement in the standard of living of the people.
  - C. creation of unemployment.
  - D. diversification of the economy.
40. The world's **busiest** shipping route is
- A. Japan to South America.
  - B. West Africa to Japan.
  - C. North America to Europe.
  - D. South East Asia to West Africa.
41. The method of mining petroleum is by
- A. open cast.
  - B. drilling.
  - C. panning.
  - D. adit.
42. The volume of trade between West African countries and developed countries is high because of
- A. similarity of products.
  - B. similarity in climate.
  - C. differences in level of technology.
  - D. poor transport links.
43. Which of the following is **not** a tree of the tropical rain forest?
- A. Mahogany
  - B. Oak
  - C. Iroko
  - D. Obeche

44. The natural vegetation of a cool temperate maritime type of climate is
- A. Deciduous forest.
  - B. Savanna.
  - C. Taiga.
  - D. Thorn woodland.
45. The climatic conditions for fruit farming in the Mediterranean region include all **except**
- A. high relative humidity of up to 90%.
  - B. bright sunny weather for ripening and harvesting.
  - C. long dry summer.
  - D. rainfall of up to 75 cm per annum.
46. Which of the following is a Francophone country?
- A. Ghana
  - B. Liberia
  - C. The Gambia
  - D. Togo
47. The Kariba Dam Hydro-Electric scheme is in
- A. Nigeria.
  - B. Zambia.
  - C. Sierra Leone.
  - D. Ethiopia.
48. Paper is **mostly** manufactured from
- A. jute.
  - B. chemical.
  - C. synthetic fibre.
  - D. wood pulp.



49. Which of the following is grown in West Africa?

- A. Oat
- B. Apricot
- C. Millet
- D. Barley

50. Which of the following countries in Africa is the **most** densely populated?

- A. Ghana
- B. Sudan
- C. Algeria
- D. Nigeria

## SECTION B

1 hour 50 minutes

## ESSAY

[70 marks]

## ELEMENTS OF PRACTICAL AND PHYSICAL GEOGRAPHY

*Answer Question 1 and any three others.**Question 1 carries 22 marks while others carry 16 marks each.**You are advised to spend not more than 30 minutes on Question 1.*

1. Study the map extract on a scale of 1:50,000 and answer the following questions:

(a) On the map provided, print the letters shown in bracket on **one** example of each of the following features:

- (i) spur (SP); [ 2 marks ]
- (ii) pass (PA); [ 2 marks ]
- (iii) knoll (KN); [ 2 marks ]
- (iv) ridge (RG); [ 2 marks ]

(b) Calculate the distance from the school at Ogga to the school at Okere along the minor road. [ 6 marks ]

(c) Using evidence from the map, state **three** land use types that are visible as one travels along the road from Ogbe to Koro. [ 6 marks ]

(d) Name **two** human features that are present in the north-western part of the map. [ 2 marks ]

2. Study the table below and answer the questions that follow.

Month	J	F	M	A	M	J	J	A	S	O	N	D
Temperature (°C)	26	26	27	29	31	33	35	34	33	32	30	27
Precipitation (mm)	38	15	15	20	0	0	0	0	0	8	18	36

(a) (i) Calculate the mean annual temperature. [ 2 marks ]

(ii) Calculate the annual temperature range. [ 2 marks ]

(iii) In what climatic region can this station be found? [ 2 marks ]

(b) Draw a combined temperature and precipitation graph for the station. [ 10 marks ]

3. (a) Distinguish between rotation and revolution of the earth. [ 4 marks ]  
(b) Describe **three** effects **each** of the earth's rotation and revolution. [ 12 marks ]
4. (a) Draw a labelled diagram of the relief of the ocean floor. [ 6 marks ]  
(b) Explain with examples, reasons for which the continental shelves provide the world's major fishing grounds. [ 10 marks ]
5. (a) Define *mass wasting*. [ 2 marks ]  
(b) List **two** factors affecting mass wasting. [ 2 marks ]  
(c) Describe any **two** types of mass wasting. [ 12 marks ]
6. Write explanatory notes on any **two** of the following:  
(a) convectional rainfall; [ 8 marks ]  
(b) land and sea breezes; [ 8 marks ]  
(c) Inter-Tropical Convergence Zone (ITCZ). [ 8 marks ]
7. (a) Explain **four** conditions that favour the formation of delta. [ 8 marks ]  
(b) Describe any **two** types of delta. [ 8 marks ]
8. (a) Define *environmental balance*. [ 2 marks ]  
(b) With the aid of a diagram, explain the water cycle. [ 8 marks ]  
(c) In what **three** ways is water cycle important to man? [ 6 marks ]