

P2041 Nov.
W.A.S.S.C.E. 1999
GEOGRAPHY 1
Objective & Essay
2 hours 40 minutes

1

Name:.....

Identification Number:.....

THE WEST AFRICAN EXAMINATIONS COUNCIL

West African Senior School Certificate Examination

November 1999

GEOGRAPHY 1

2 hours 40 minutes

Do **not** open this booklet until you are told to do so. While you are waiting, read the following instructions carefully. Write your **Name** and **Identification Number** in the spaces provided at the top right-hand corner of this booklet. This paper consists of **two** sections; answer Section A on your Objective Test answer sheet and Section B in your answer book. Section A will last for **50 minutes** after which the answer sheets will be collected. Do **not** start Section B until you are told to do so. Section B will last for **1 hour 50 minutes**.

SECTION A

50 minutes

OBJECTIVE TEST

[50 marks]

1. Use **HB** pencil throughout.
2. If you have got a blank answer sheet, complete the top section of it as follows:
 - (a) In the space marked *Name*, write in capital letters your **surname** followed by your **other names**.
 - (b) In the spaces marked *Examination, Year, Subject* and *Paper*, write 'W.A.S.S.C.E.', '1999 NOVEMBER', 'GEOGRAPHY' and '1', respectively.
 - (c) In the box marked *Identification Number*, write down your **Identification number** vertically in the spaces on the left-hand side. There are numbered spaces in line with each digit. Shade carefully the space with the same number as each digit.
 - (d) In the box marked *Subject Code*, write down the digits **204113** in the spaces on the left-hand side. Shade the corresponding numbered spaces in the same way as for your identification number.
 - (e) In the box marked *Sex*, shade the space marked **M** if you are **male**, or **F** if you are **female**.
3. If you have got a pre-printed answer sheet, check that the details are correctly printed, as described in 2 above. In the boxes marked *Identification Number, Subject Code* and *Sex*, reshade each of the shaded spaces.
4. An example is given below. This is for a **male** candidate, whose **name** is Kayode Olusola AKINDELE, whose **Identification number** is 5251102068, and who is offering Geography 1.

THE WEST AFRICAN EXAMINATIONS COUNCIL

PRINT IN BLOCK LETTERS

Name: AKINDELE KAYODE OLUSOLA Examination: W.A.S.S.C.E. Year: 1999 NOV.
Surname Other Names
Subject: G E O G R A P H Y Paper: 1

IDENTIFICATION NUMBER

5	0	0	1	2	3	4	5	6	7	8	9
2	0	0	1	2	3	4	5	6	7	8	9
5	0	0	1	2	3	4	5	6	7	8	9
1	0	0	1	2	3	4	5	6	7	8	9
1	0	0	1	2	3	4	5	6	7	8	9
0	0	0	1	2	3	4	5	6	7	8	9
2	0	0	1	2	3	4	5	6	7	8	9
0	0	0	1	2	3	4	5	6	7	8	9
6	0	0	1	2	3	4	5	6	7	8	9
8	0	0	1	2	3	4	5	6	7	8	9

For Supervisors only.

If candidate is absent shade this space: ☐

SUBJECT CODE

2	0	0	1	2	3	4	5	6	7	8	9
0	0	0	1	2	3	4	5	6	7	8	9
4	0	0	1	2	3	4	5	6	7	8	9
1	0	0	1	2	3	4	5	6	7	8	9
1	0	0	1	2	3	4	5	6	7	8	9
3	0	0	1	2	3	4	5	6	7	8	9

SEX

Indicate your sex by shading the space marked **M** (for Male) or **F** (for Female) in this box: ☐ M ☐ F

INSTRUCTIONS TO CANDIDATES

1. Use grade **HB** pencil throughout.
2. Answer each question by choosing one letter and shading it like this: [A] [B] [C] ☒
3. Erase completely any answers you wish to change.
4. Leave extra spaces blank if the answer spaces provided are more than you need.
5. Do not make any markings across the heavy black marks at the right hand edge of your answer sheet.

Answer all the questions.

Each question is followed by four options lettered A to D. Find out the correct option for each question and shade in pencil on your answer sheet, the answer space which bears the same letter as the option you have chosen.

Give only one answer to each question. An example is given below.

Which of the following is **not** an ocean current in the North Atlantic?

- A. Labrador
- B. Benguela
- C. Cayenne
- D. Irminger

The correct answer is Benguela, which is lettered B, and therefore, answer space B would be shaded.

[A]



[C]

[D]

Think carefully before you shade the answer spaces; erase completely any answers you wish to change.

Do all rough work on this question paper.

Now answer the following questions:

Detach the map of GARAHA DISTRICT on page 3 and use it to answer Questions 1 – 11.

1. The scale of the map in representative fraction is

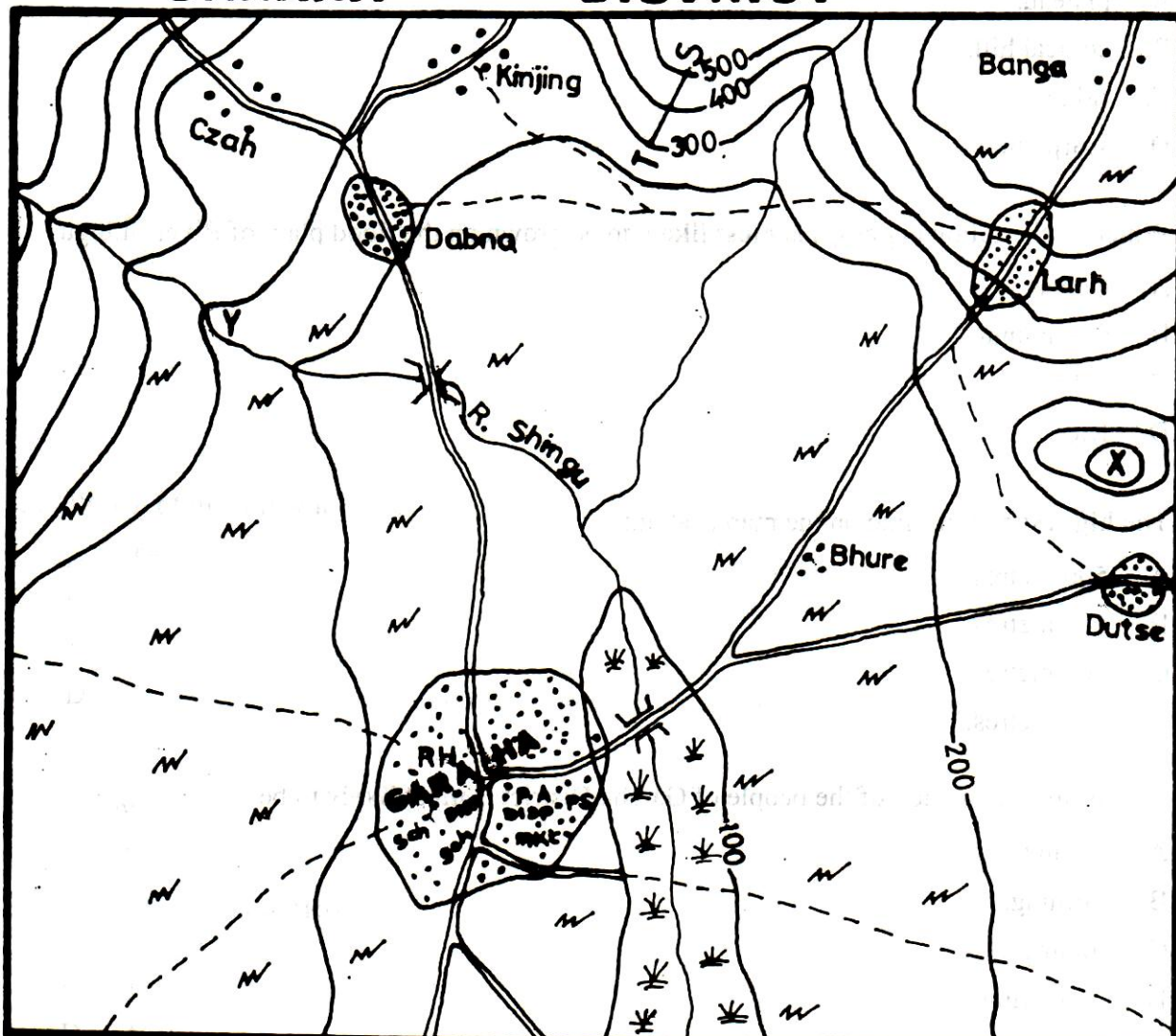
- A. 1 : 1,000.
- B. 1 : 20,000.
- C. 1 : 200,000.
- D. 1 : 1,000,000.

2. The distance between Larh and Dutse as the crow flies is approximately

- A. 14 km.
- B. 11 km.
- C. 9 km.
- D. 6 km.

3. If the map is enlarged to four times its present size, the scale of the new map will be

- A. 1 : 1,000,000.
- B. 1 : 250,000.
- C. 1 : 100,000.
- D. 1 : 50,000.

GARAHA**DISTRICT**

2 0 2 4 6 8 Km

Key

	Contour in metres		Scattered cultivation
	Settlement		Area liable to flood
	Footpath		Road
	River		Bridge

Turn over

4. The feature marked X on the map can best be described as a

A. plateau.
B. conical hill.
C. ridge.
D. scarpland.

5. Which of the following crops is most likely to be grown on the flood plain of River Shingu?

A. Cocoa
B. Groundnut
C. Wheat
D. Rice

6. The highest contour line on the map is about

A. 500 metres.
B. 600 metres.
C. 700 metres.
D. 800 metres.

7. The major occupation of the people of Garaha District is most likely to be

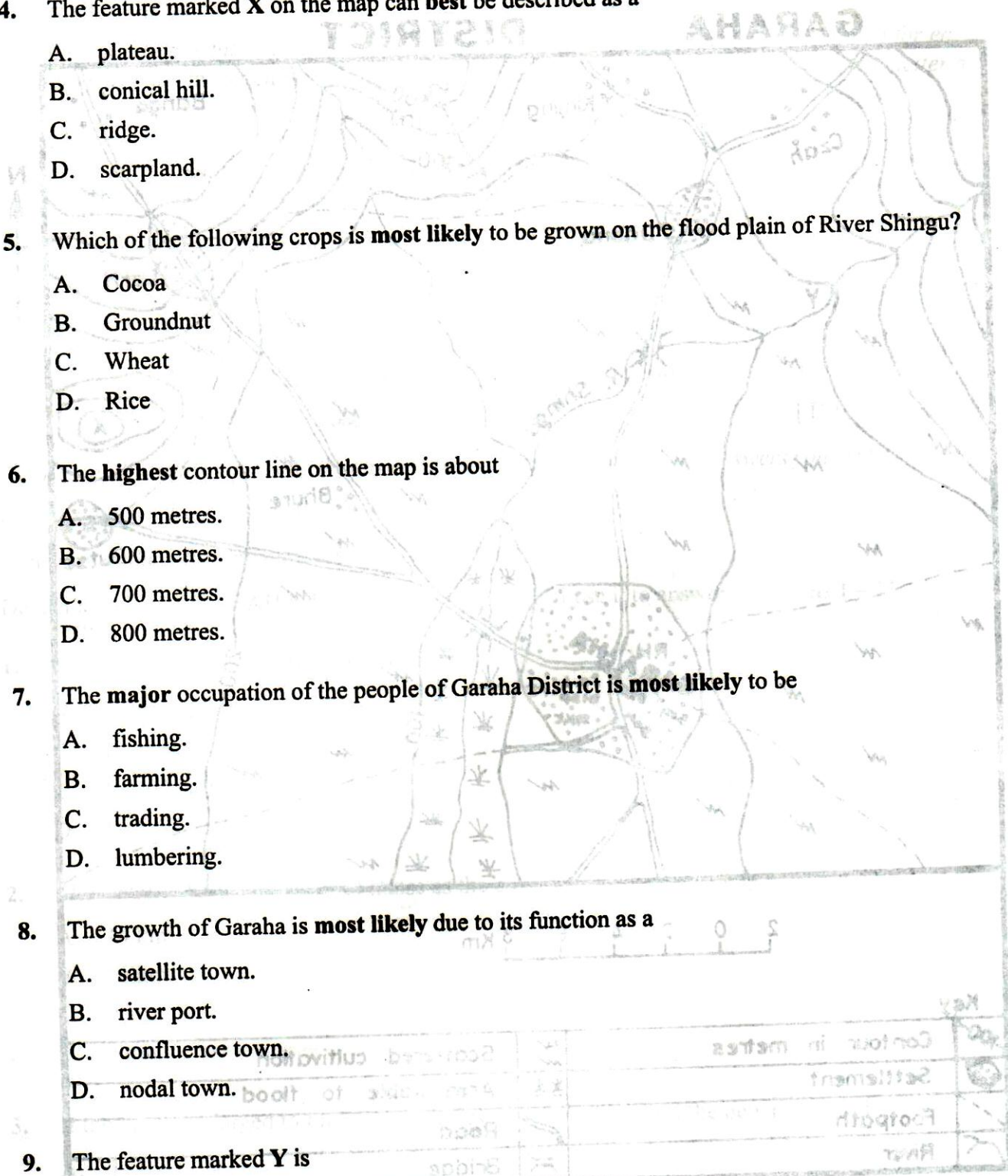
A. fishing.
B. farming.
C. trading.
D. lumbering.

8. The growth of Garaha is most likely due to its function as a

A. satellite town.
B. river port.
C. confluence town.
D. nodal town.

9. The feature marked Y is

A. a meander.
B. a dissected highland.
C. an undulating plain.
D. a river valley.



10. The area marked T—S is best described as a
- col.
 - spur.
 - valley.
 - scarp.
11. The bearing of Dabna from Dutse is approximately
- 315°.
 - 245°.
 - 135°.
 - 45°.
12. Which of the following is not correct about the Great Circle ?
- The Great Circle divides the earth into two equal spheres.
 - The centre of the Great Circle is also the centre of the earth.
 - The Equator is a Great Circle among the latitudes.
 - The Greenwich Meridian and the International Date Line are the only lines of latitude forming a Great Circle.
13. Countries in the northern hemisphere experience shorter days and longer nights when the sun is overhead on the
- Tropic of Capricorn.
 - Equator.
 - Tropic of Cancer.
 - Arctic Circle.
14. Crater lakes are usually associated with areas
- that have extinct volcanoes.
 - that have heavy fault lines.
 - that have active volcanoes.
 - where subsidence has taken place.
15. Which of the following rocks is organically formed ?
- Gypsum
 - Coal
 - Grit
 - Shale

16. *River regime* is best described as the
- rate at which a river flows.
 - seasonal variation in the volume of water in a river.
 - period a river overflows its banks.
 - amount of load a river carries.
17. One of the features of wind deposition is
- an inselberg.
 - a barchan.
 - a mesa.
 - a ventifact.
18. Plateaux formed together with fold mountains are best described as
- piedmont.
 - intermontane.
 - tectonic.
 - dissected.
19. Water vapour is turned into water droplets by the process of
- evaporation.
 - liquefaction.
 - convection.
 - condensation.
20. Jos Plateau is an example of a
- volcanic plateau.
 - plutonic plateau.
 - tectonic plateau.
 - basalt plateau.
21. A line joining all points of equal salinity is an
- isopach*.
 - isopleth*.
 - isohaline*.
 - isobar*.

22. An example of a coastline of emergence is
- a raised beach.
 - an estuarian coast.
 - a dalmatian coast.
 - a ria coast.
23. Which of the following influences the ability of a river to carry heavy load of debris?
- Volume of the water
 - Temperature of the water
 - Freshness of the water
 - Size of particles that make up the rocks
24. In which erosional plain is an inselberg commonly found?
- Peneplain
 - Pediplain
 - Flood plain
 - Out-wash plain
25. Tropical savanna vegetation is characterized by
- drought-resistant trees.
 - trees with broad leaves and fleshy bark.
 - palm trees and thorny scrub.
 - scattered evergreen trees.
26. Which of the following is **not** a typical Guinea savanna tree?
- Locust bean
 - Shea butter
 - Isobertina
 - Date palm
27. "An open forest with evergreen, thick leathery leaves and woody stems with deep roots" is known as
- tropical rainforest.
 - hot desert vegetation.
 - Mediterranean vegetation.
 - montane vegetation.

28. The broad-leafed evergreen and dense equatorial forest of the Amazon basin is called
- Selvas.*
 - Campos.*
 - Pampas.*
 - Llanos.*
29. Which of the following is associated with savanna vegetation?
- Shallow-rooted trees
 - Trees that grow throughout the year
 - Scrub
 - Dense vegetation
30. The type of agriculture in which water is conserved in a year so that crops can be grown in succeeding years by ploughing, mulching or harrowing is known as
- dry farming.*
 - intensive cultivation.*
 - arable farming.*
 - extensive cultivation.*
31. Soil erosion by action of rain can be caused by all the following **except**
- scanty vegetation.
 - steep slopes.
 - aridity.
 - tropical rainstorms.
32. Urban type of settlement is **best** described as
- linear.*
 - nucleated.*
 - dispersed.*
 - isolated.*
33. Which of the following statements is **not true** of the North Atlantic sea route?
- It is the busiest sea route.
 - It links Nigeria with Europe.
 - Goods carried on the route include grains.
 - It links North America with Europe.

34. The world's greatest gold producer is
- Nigeria.
 - Canada.
 - Ghana.
 - South Africa.
35. A settlement located where two rivers meet is called a
- nucleated settlement.
 - confluence town.
 - linear settlement.
 - nodal town.
36. Exports from Mali are most likely to pass through the sea port at
- Lagos.
 - Dakar.
 - Banjul.
 - Conakry.
37. Which of the following produce is mainly associated with the middle belt of Nigeria?
- Millet
 - Groundnut
 - Cotton
 - Yam
38. The highest concentration of industries in Nigeria is found in the
- North-central Zone.
 - Western Zone.
 - Mid-western Zone.
 - South-eastern Zone.
39. The coastal regions of Sierra Leone record an annual rainfall of over
- 3,000 mm.
 - 4,800 mm.
 - 5,000 mm.
 - 6,500 mm.

40. Which of the following has adverse effects on the development of agriculture in Nigeria ?
- Establishment of agricultural banks
 - Establishment of Universities of Agriculture
 - Encouragement of greater research into food storage
 - Lifting of the ban on the importation of food items
41. Which of the following has the **highest** salinity ?
- South Atlantic Ocean
 - Dead Sea
 - Mediterranean Sea
 - Red Sea
42. Nigeria's major export commodity is
- coal.
 - cocoa.
 - cotton.
 - petroleum.
43. Kossou Dam is located on River
- Volta.
 - Bandama.
 - Cunene.
 - Nile.
44. The major crop grown in the El Juf Basin of Mali is
- cotton.
 - cocoa.
 - cashew.
 - coffee.
45. The dam which is **not** used in the Gezira is the
- Aswan.
 - Sennar.
 - Roseires.
 - Jebel Aulia.
46. Africa has the **largest** potential reserves of hydro-electric power in the world because
- Africans have not developed the use of hydro-electricity.
 - many of the areas are not accessible.
 - it has copious rainfall and many waterfalls.
 - it is surrounded by large oceans.

47. The land-use activities which can be considered responsible for soil erosion in the tropics are
- A. bush fallowing, over-grazing and monoculture.
 - B. industrialization, monoculture and lumbering.
 - C. mining, bush fallowing and market gardening.
 - D. irrigation, terrace farming and crop rotation.
48. Which of the following stations is situated in a region of tropical monsoon climate?
- A. Durban
 - B. Valencia
 - C. In Salah
 - D. Bombay (Mumbai)
49. Which of the following is **not** a problem militating against political and economic integration in West Africa ?
- A. Powerful colonial economic ties
 - B. Religion
 - C. Political instability
 - D. Currency
50. A major percentage of the world's exports of citrus fruits is from the
- A. tropical region.
 - B. cool temperate region.
 - C. polar region.
 - D. mediterranean region.

**DO NOT TURN OVER THIS PAGE
UNTIL YOU ARE TOLD TO DO SO.**

**YOU WILL BE PENALIZED SEVERELY IF YOU ARE
FOUND LOOKING AT THE NEXT PAGE BEFORE
YOU ARE TOLD TO DO SO.**

SECTION B

MAP READING AND INTERPRETATION

1 hour 50 minutes

[22 marks]

*Answer Question 1 and any other three questions.**You are advised to spend not more than 30 minutes on this compulsory question.*

1. Study the map extract on a scale of 1:50,000 and answer the following questions:

(a) In your answer book, draw an outline of the area labelled ABCD on a scale of 1:25,000.

(b) On your outline, insert and name

(i) the minor roads;

(ii) river Senche (use an arrow to show the direction of flow);

(iii) Bantai and Dasun settlements;

(iv) the 1,250 feet contour line.

(c) Using the whole map extract,

(i) identify three land-use types;

(ii) describe any two cultural and two physical features which you would come across on a journey along the road from Marabu to Luga Chamba.

2. (a) Write notes on each of the following:

(i) Great Circles;

(ii) Local Time.

- (b) A concert arranged to commence at 12 midnight on Sunday in Sydney (Australia) 150°E is to be televised. When will a family wishing to watch the programme in Accra (Ghana) tune in to the television for the programme ?
3. (a) Name the **three** classes of sedimentary rocks.
- (b) Explain with examples, the processes of formation of the **three** classes of sedimentary rocks.
- (c) State **four** uses of rocks to man.

Month	Jan	Feb	Mar	Apr	May	June	July	Aug	Sept	Oct	Nov	Dec
Temp in °C	23	24	29	32	31	37	27	26	27	27	26	27
Rainfall in mm	0	2	2	13	64	122	208	300	140	13	0	0

The Table above shows the climatic data of a station in the world. Use the data provided to answer the following questions.

- (a) (i) Calculate the temperature range.
- (ii) Find the annual rainfall for the station.
- (iii) State the hemisphere in which the station can be found.
- (iv) Suggest the climatic type.
- (v) Give one reason for your suggestion.
- (b) (i) Indicate the type of vegetation associated with the climate suggested in a (iv) above.
- (ii) Explain **three** characteristic features of the vegetation that have enabled it to adapt to the type of climate mentioned above.

5. Study the Pie-Chart (Figure 1) showing the components of a mature soil, and answer the following questions:

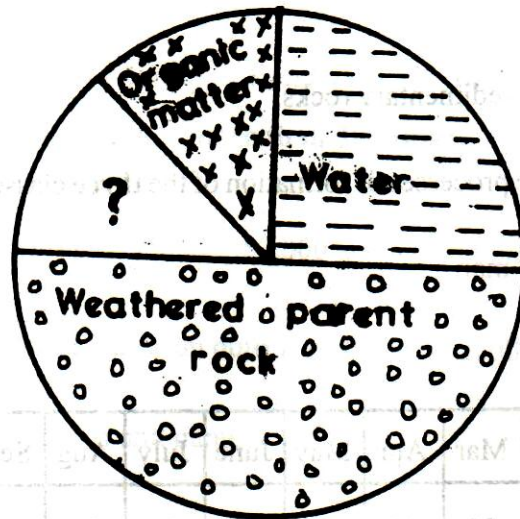


Fig. 1

(a) Identify

(i) the fourth component.

(ii) two contributions of the fourth component to the soil formation.

(b) Describe

(i) how the organic material is derived.

(ii) the difference between a peat-soil and a mature soil.

(c) Explain three ways by which a soil that is eroded can be improved for farming.

6. (a) Draw a suitable diagram to show the various World Pressure belts and Planetary winds.

(b) Account for the occurrence of

(i) Low Pressure belt along the equator.

(ii) Sub-Tropical High Pressure belts.

7. (a) Distinguish between an *ecosystem* and a *food chain*.
- (b) Explain the various ways man has affected the ecosystem.
8. (a) Define the term *soil erosion*.
- (b) Explain the various physical factors which can encourage soil erosion.
- (c) Outline four ways of preventing coastal erosion.

Use HB pencil

If you have got a question mark on the top section

in the space provided, write down your ID number

in the spaces provided. Subject and Sex

NOVEMBER, 1994. Write down your ID number

in the box marked Identification. Write down your ID number

in the left-hand column. Write down your ID number

in the right-hand column. Write down your ID number

in the bottom row. Write down your ID number

in the bottom row. Write down your ID number

in the bottom row. Write down your ID number

in the bottom row. Write down your ID number

in the bottom row. Write down your ID number

in the bottom row. Write down your ID number

in the bottom row. Write down your ID number

in the bottom row. Write down your ID number

in the bottom row. Write down your ID number

in the bottom row. Write down your ID number

in the bottom row. Write down your ID number

in the bottom row. Write down your ID number

in the bottom row. Write down your ID number

Use HB pencil

If you have got a question mark on the top section

in the space provided, write down your ID number

in the spaces provided. Subject and Sex

NOVEMBER, 1994. Write down your ID number

in the box marked Identification. Write down your ID number

in the left-hand column. Write down your ID number

in the right-hand column. Write down your ID number

in the bottom row. Write down your ID number

in the bottom row. Write down your ID number

in the bottom row. Write down your ID number

in the bottom row. Write down your ID number

in the bottom row. Write down your ID number

in the bottom row. Write down your ID number

in the bottom row. Write down your ID number

in the bottom row. Write down your ID number

in the bottom row. Write down your ID number

in the bottom row. Write down your ID number

in the bottom row. Write down your ID number

in the bottom row. Write down your ID number

in the bottom row. Write down your ID number

in the bottom row. Write down your ID number

in the bottom row. Write down your ID number

in the bottom row. Write down your ID number

in the bottom row. Write down your ID number

THE WEST AFRICAN EXAMINATIONS COUNCIL

ALABAMA CODE OLUSOLA

WASS.C.E. Year 11

WASS.C.E. Year 11

WASS.C.E. Year 11

WASS.C.E. Year 11

WASS.C.E. Year 11

WASS.C.E. Year 11

WASS.C.E. Year 11